

FOR SALE

RESIDENTIAL - CONDOMINIUM 700SQFT (65SQM) / CALL FOR PRICE!

+65 8186 8917



2 - BEDROOM PREMIUM

TYPE BPI TYPE BPI-R

65 sq m | 700 sq ft

72 sq m | 775 sq ft

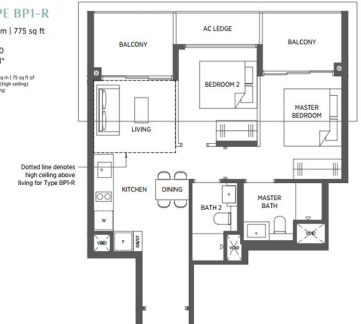
#02-40 to #17-40

#18-40

#02-41 to #17-41

#18-41

bed off plan (75 sq ft if
you are eye seeing
view here)



RESIDENTIAL - CONDOMINIUM

PARC ESTA, 902, SIMS AVENUE, EUNOS, GEYLANG,
PAYA LEBAR, SINGAPORE 408967

- LISTING ID: SGLD81274744
- TENURE: LEASEHOLD 99
- TITLE: N/A
- SIZE BUILT-UP: 700SQFT (65SQM)
- SIZE LAND: N/A
- NO. OF FLOORS: 18
- FLOOR/LEVEL: N/A - MIDDLE FLOOR
- BED ROOMS: 2+1
- BATH ROOMS: 1
- MAIDS ROOMS: N/A
- PARKING SPACES: 1
- LAYOUT TYPE: OTHER
- FACING: N/A
- VIEWING: N/A
- SELLING PRICE: **CALL FOR PRICE!**
- COMPLETION YEAR: 2022
- CONDITION: ORIGINAL CONDITION
- FURNISHING: PARTIALLY FURNISHED
- LISTING DATE: FEB 26, 2019

PARC ESTA

Partially furnished, 2 bedroom, 1 bathroom Condominium for Sale. Completed in 2022, this middle floor unit is in original condition. Others: leasehold 99, 1 other room(s), 1 parking space(s) Located in Singapore's district D14 near Eunos, Geylang, Paya Lebar in the area Eunos (Central region).

INTERIOR AND FEATURES

- Balcony

AMENITIES

- 24 Hours Security
- Clubhouse
- Cafe
- Covered Car Park

VISIT THIS PROPERTY AT: <https://www.sghomes4sale.com/property/SGLD81274744>



GARY NG - HUTTONS ASIA PTE LTD

3 Bishan Place #05-01 CPF Bishan Building
D20, 579838, Singapore

+65 8186 8917
WhatsApp Me

gary@sghomes4sale.com

L3008899K
R026655A

<https://www.sghomes4sale.com>



Scan QR Code

Huttons Call for Viewing
The Agency of Choice +65-81868917

smartrealtor
property advertising made simple